



**COALWAY COMMUNITY INFANT SCHOOL**

**Telephone: 01594 833457**

**Email: [admin@coalway-inf.gloucs.sch.uk](mailto:admin@coalway-inf.gloucs.sch.uk)**

**Website: [www.coalway-inf.gloucs.sch.uk](http://www.coalway-inf.gloucs.sch.uk)**



# Newsletter: Summer Term 1

## Welcome back!



We hope that everyone had an enjoyable Easter.

### Curriculum Overviews for Parents

Curriculum overviews have been added to the Class page of the school website, to give parents an outline of work which their child will be covering in class this term. We hope that you will find this informative and helpful. If required, spare copies are also available in the entrance foyer.

### Parents' Consultations



We will be holding our mid-year parents' evening on Wednesday 1<sup>st</sup> May starting at 3.15 pm - parents will be able to book a 10 minute appointment time via ParentMail from 25<sup>th</sup> April. On arrival, please go to the school hall where you can look at your child's work. Please can we remind you to keep to the 10 minute allocation to support the teachers to keep to the appointment schedule.

This term's parents' consultations is an opportunity to discuss your child's progress and to look at the learning and progress, so far, this year.

### Admission to Infant & Junior School

Tuesday 16<sup>th</sup> April was school placement notification day regarding school placements for September 2024. If you need support in regard to your Junior School, or Reception School place, please contact the school office. New Reception Intake Evening for September 2024, will take place on Thursday 13<sup>th</sup> June from 6.00 pm.

### Attendance



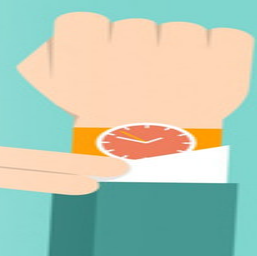
Thank you to all parents who telephone or email to let us know of their child's absence. This is a significant help to the staff and ensures that appropriate absence records are kept for your child. If your child is unwell and cannot attend school please could you inform the School Office as early as possible (preferably by 9.00 am). As part of our attendance procedures Mrs. Edwards or Mrs. Cornes may contact you via telephone or ParentMail if we are unsure of a reason for absence.

To raise parents' awareness of their child's attendance to date, we will be sending home a printout of their attendance. This identifies their percentage attendance since September and the number of authorised and unauthorised absences. Also listed is the number of sessions your child has attended - remember that there are two sessions per day, a morning and an afternoon session.

We will continue to monitor absence reasons and regularity of lateness throughout the year. For your information, the Government figure for persistent absence is an attendance rate of below 90%.

## EVERY MINUTE COUNTS

MINUTES LATE PER DAY	EQUIVALENT OF MISSING	HOW MANY LESSONS THIS IS MISSED
5 MINUTES	3.4 SCHOOL DAYS A YEAR	17 LESSONS
10 MINUTES	6.9 SCHOOL DAYS A YEAR	35 LESSONS
15 MINUTES	10.3 SCHOOL DAYS A YEAR	51 LESSONS
20 MINUTES	13.8 SCHOOL DAYS A YEAR	69 LESSONS
30 MINUTES	20.7 SCHOOL DAYS A YEAR	104 LESSONS



Core Values: Kindness, Respect, Support, Wellbeing, Success

We would also ask that all parents ensure we have 3 up to date contact details within the School Office to ensure that we are able to contact you in an emergency, such as your child becoming ill during the school day.

### **Polite Reminder**

Children can come into their classrooms from 8.35 am where they will read or share a book until registration at 8.45 am.

As you will appreciate, this is a very busy time for teachers. If you need to speak to the class teacher, please make an appointment for the end of the school day. Please also support us by not entering the classrooms, at this busy time, whilst the staff are beginning the routine of the school day.

### **Parking**

Some parents have brought to our attention that they are concerned about the safety of their children at pick up and drop off. Please can you support us to keep everyone safe by not dropping off in the school gateway and please ensure you park safely. Thank you.

### **Uniform**

From September we will be moving to online uniform (sweatshirt / cardigans) ordering. Details to follow. We still hold some stock in school if you wish to purchase any uniform and will also be having regular pre-loved uniform sales.

### **Head Lice**

Information on Head Lice is published in the newsletter at the beginning of every other term in line with the advice issued by the Gloucestershire Health Protection Unit. It is each parents' responsibility to check hair at least once a week and to treat if necessary. Please find below Local Authority information which we advise parents to read carefully.

The advice, briefly, is as follows:-

- An attempt should be made to remove the head lice by repeated combing of wet hair using a plastic head louse detector comb. Combs are available from pharmacies. Plastic head louse detector combs must be used.
- If this fails to clean the headlice infestations, parents should contact the Health Centre (0300 4218850) for a recommended lotion or further advice can be obtained from the school nurse on the same number.

It is most important that .....

- you check your child(ren)'s hair on a regular basis and follow this advice
- long, loose hair should be tied back to reduce the risk.

### **Dates for the Diary**

#### **May**

Wednesday 1<sup>st</sup>

Parent Consultations

Monday 6<sup>th</sup>

Bank Holiday

Thursday 9<sup>th</sup>

Class & Leavers photos

Friday 24<sup>th</sup>

End of term school finishes at 3.15 pm

**Monday 27<sup>th</sup> May – Friday 31<sup>st</sup> May Whitsun half term**

**Return to school Monday 3<sup>rd</sup> June**